

Metalco S.p.A. utilizza vernici P.P. opaco raggrinzanti. solo a richiesta e con sovrapprezzo i materiali possono essere verniciati con finitura lucida. La riproduzione su carta dei colori é infedele, confrontare le relative cartelle RAL.

Metalco S.p.A. uses matt textured polyester powder paints. Only on request, and subject to a supplementary cost, the products can be supplied with a glossy finish. The printed colour chart cannot reproduce the actual colours with precision; refer to the RAL colour charts.



RAL 1013



RAL 1021



RAL 1028



RAL 2002



RAL 3000



RAL 3003



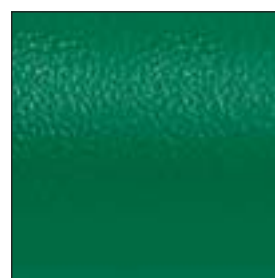
RAL 4007



RAL 5010



RAL 6005



RAL 6029



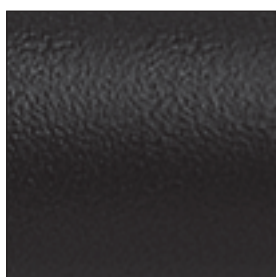
RAL 7001



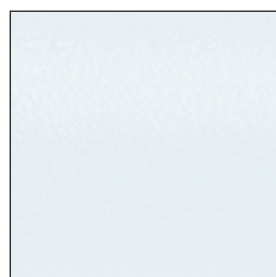
RAL 7016



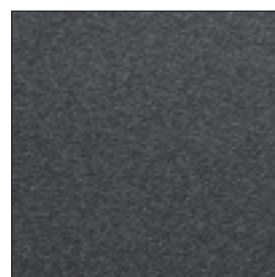
RAL 8017



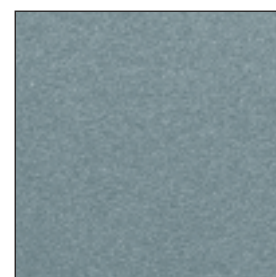
RAL 9005



RAL 9010



200 nero sablè



250 sablè



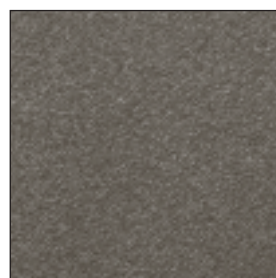
300 verde sablè



650 sablè



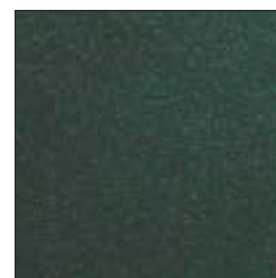
700 blu sablè



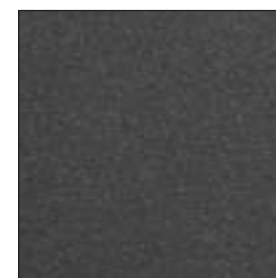
900 grigio sablè



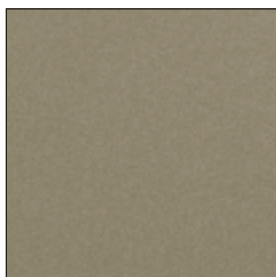
MW 3021 argento sablè



500 verde muschio sablè



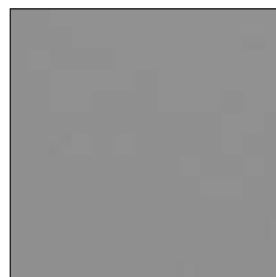
grigio ferro



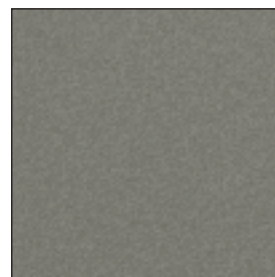
RAL 1035



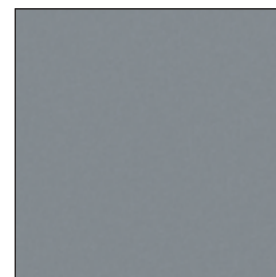
RAL 1036



RAL 9006



RAL 9007



RAL 9022